

Sawman Parting Off Tools



The Sawman Parting range is the 1st choice system for all parting applications, providing high performance, good tool life and fantastic value. The Korloy blade is compatible with all industry standard parting blocks.

- Grades for parting all materials
- Neutral, Right or Left handed inserts
- Minimum nosed radius to minimise the size of the burr
- Small chips due to special chip breaker and cutting edge design
- Block and blade type or integral square shank type

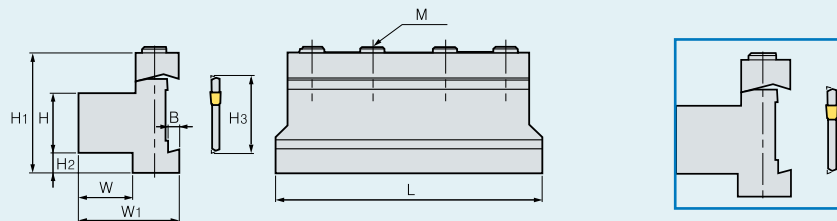


Parting Inserts

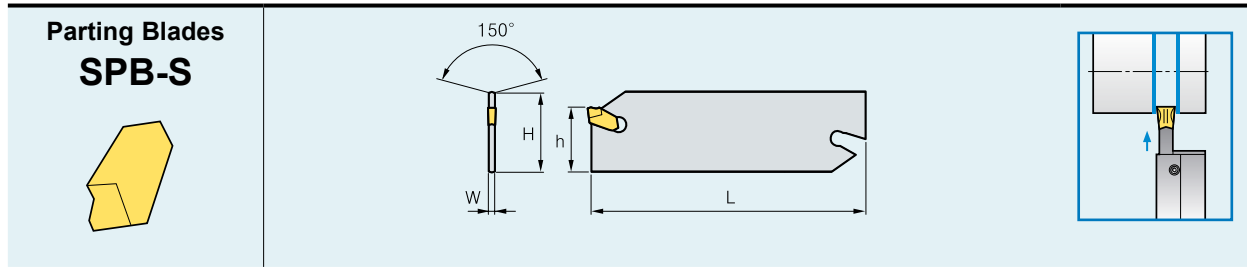
Picture	Designation	£	Grades					Dimensions (mm)			Configuration	
			NC3120	NC3030	PC8110	PC9030	PC6510	H01	w	l		r
	SP200	£3.82	•	•	•	•	•	•	2.2	9.3	0.2	Right Hand Neutral
	SP200R	£3.82	•	•	•	•	•	•	2.2	9.3	0.2	
	SP200L	£3.82	•	•					2.2	9.3	0.2	
	SP300	£3.99	•	•	•	•	•	•	3.1	11.3	0.2	
	SP300R	£3.99	•	•	•	•	•	•	3.1	11.3	0.2	
	SP300L	£3.99	•	•					3.1	11.3	0.2	
	SP400	£4.32	•	•	•	•	•	•	4.1	11.3	0.25	Left Hand
	SP400R	£4.32	•	•	•	•	•	•	4.1	11.3	0.25	
	SP400L	£4.32	•	•					4.1	11.3	0.25	
	SP500	£4.49	•	•					5.1	11.4	0.3	W = ±0.1
	SP500R	£4.49							5.1	11.4	0.3	
	SP500L	£4.49							5.1	11.4	0.3	
	SP600	£4.93	•	•					6.4	11.4	0.35	
SP600R	£4.93							6.4	11.4	0.35		
SP600L	£4.93							6.4	11.4	0.35		

SP***R = Right Hand, SP***L = Left Hand, SP*** = Neutral Stock Status • Stock item (next day delivery) □ Non-stock item (7-10 days)

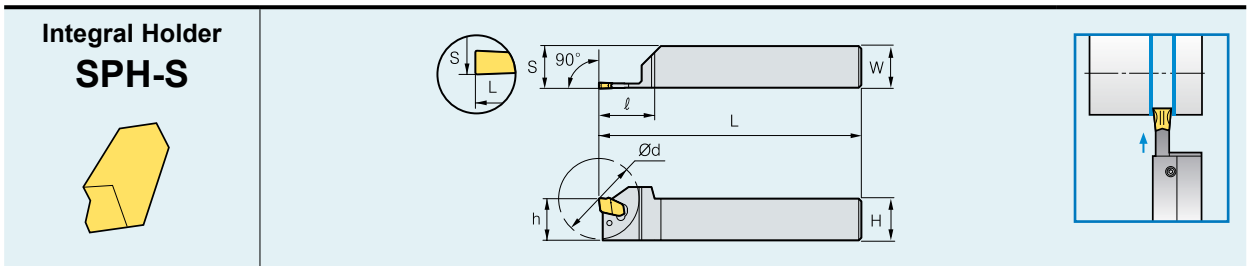
Parting Blocks SMBB



Designation	£	H	W	H3	L	H1	H2	W1	B	M	BLADES	WRENCH
SMBB	16-26	£45.00	16	12	26	86	43	13	30	5.3	3-M6	HW50L
	20-26	£45.00	20	19	26	86	43	9	38	5.3	3-M6	
	20-32	£45.00	20	19	32	100	50	13	38	5.3	4-M6	
	25-26	£45.00	25	23	26	86	43	4	42	5.3	4-M6	
	25-32	£45.00	25	23	32	110	50	8	42	5.3	4-M6	
	32-32	£45.00	32	30	32	110	54	5	48	5.3	4-M6	



DESIGNATION	£	H	W	L	h	INSERTS	WRENCH	
SPB-S	226-S	£34.00	26	1.6	110	21	SP200, 200R/L	SW15S
	326-S	£34.00	26	2.4	110	21	SP300, 300R/L	
	426-S	£34.00	26	3.2	110	21	SP400, 400R/L	
	232-S	£34.00	32	1.6	150	25	SP200, 200R/L	
	332-S	£34.00	32	2.4	150	25	SP300, 300R/L	
	432-S	£34.00	32	3.2	150	25	SP400, 400R/L	
	532-S	£34.00	32	4	150	25	SP500, 500R/L	
	632-S	£34.00	32	5.2	150	25	SP600, 600R/L	



DESIGNATION	£	STOCK		H=(h)	W	L	ØD	S	INSERTS	WRENCH	
		R	L								
SPH	216R/L-S	£45.00	•	•	16	16	100	28	16.2	SP200, 200R/L	SW15S
	220R/L-S	£45.00	•	•	20	20	120	30	20.2		
	225R/L-S	£45.00	•	•	25	25	150	40	25.2		
	316R/L-S	£45.00	•	•	16	16	100	32	16.3	SP300, 300R/L	
	320R/L-S	£45.00	•	•	20	20	120	40	20.3		
	325R/L-S	£45.00	•	•	25	25	150	50	25.3		
	420R/L-S	£45.00	•	•	20	20	120	50	20.4	SP400, 400R/L	
	425R/L-S	£45.00	•	•	25	25	150	60	25.4		
	520R/L-S	£45.00	•	•	20	20	120	60	20.5	SP500, 500R/L	
	525R/L-S	£45.00	•	•	25	25	150	70	25.5		

Stock Status • Stock item (next day delivery) □ Non-stock item (7-10 days)

Recommended Cutting Conditions

Workpiece	Speed (m/min)						Feed (mm/rev) by cutting width (mm)				
	NC3120	NC3030	PC9030	PC8110	PC6510	H01	2	3	4	5	6
Steels	80~180	70~150					0.02~0.15	0.03~0.2	0.08~0.3	0.10~0.4	0.12~0.5
Stainless steels & Exotics			60~140	50~120			0.02~0.1	0.03~0.15	0.08~0.25	0.1~0.35	0.12~0.40
Cast iron					50~100	50~100	0.05~0.12	0.1~0.25	0.1~0.30	0.1~0.35	0.1~0.40
Non-ferrous metals						200~450	0.05~0.1	0.05~0.2	0.05~0.25	0.05~0.30	0.05~0.35