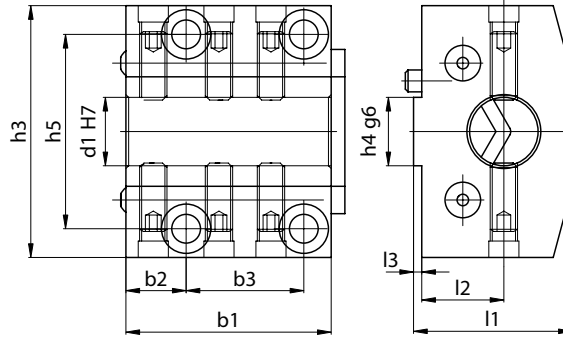




BASE MOUNT Boring Bar Holder



LONGITUDINAL TOOL HOLDER FOR BORING BARS

PU1

Order Code	£	d1	h3	h4	h5	b1	b2	b3	l1	l2	l3
PU1-12-12	£131.04	12	48	12	36	40	12	21.5	36	20	3
PU1-12-16	£131.04	16	48	12	36	40	12	21.5	36	20	3
PU1-12-20	£131.04	20	48	12	36	40	12	21.5	36	20	3
PU1-12-25	£131.04	25	48	12	36	40	12	21.5	43	23	3
PU1-16-16	£133.12	16	61	16	46.5	50	14.5	28	43	23	3
PU1-16-20	£133.12	20	61	16	46.5	50	14.5	28	43	23	3
PU1-16-25	£133.12	25	61	16	46.5	50	14.5	28	43	23	3
PU1-16-32	£133.12	32	61	16	46.5	50	14.5	28	53	30	3
PU1-20-20	£146.64	20	74	20	57	60	17.5	34	48	25	3
PU1-20-25	£146.64	25	74	20	57	60	17.5	34	48	25	3
PU1-20-32	£146.64	32	74	20	57	60	17.5	34	48	25	3
PU1-20-40	£146.64	40	74	20	57	60	17.5	34	60	32	3
PU1-25-20	£178.88	20	92	25	71	75	22	43	58	30	3
PU1-25-25	£178.88	25	92	25	71	75	22	43	58	30	3
PU1-25-32	£178.88	32	92	25	71	75	22	43	58	30	3
PU1-25-40	£178.88	40	92	25	71	75	22	43	58	30	3
PU1-25-50	£178.88	50	92	25	71	75	22	43	73	38	3
PU1-32-25	£198.64	25	115	32	90	95	26	57	73	35	3
PU1-32-32	£198.64	32	115	32	90	95	26	57	73	35	3
PU1-32-40	£198.64	40	115	32	90	95	26	57	73	35	3
PU1-32-50	£198.64	50	115	32	90	95	26	57	73	35	3
PU1-32-60	£198.64	60	115	32	90	95	26	57	83	40	3
PU1-40-32	£226.72	32	142	40	111	125	33	77	85	40	5
PU1-40-40	£226.72	40	142	40	111	125	33	77	85	40	5
PU1-40-50	£226.72	50	142	40	111	125	33	77	85	40	5
PU1-40-60	£226.72	60	142	40	111	125	33	77	85	40	5

Spindle Tooling

Dinox Modular

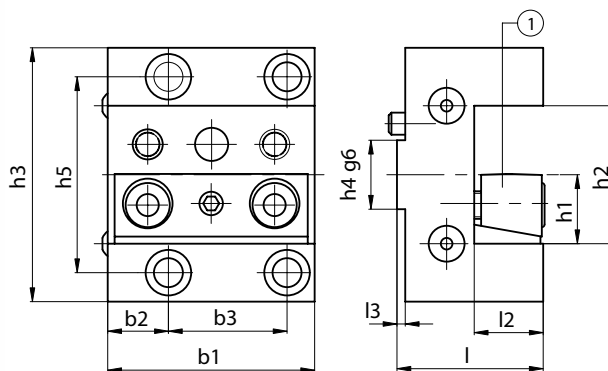
Angle Heads

VDI Tooling

Driven Tooling

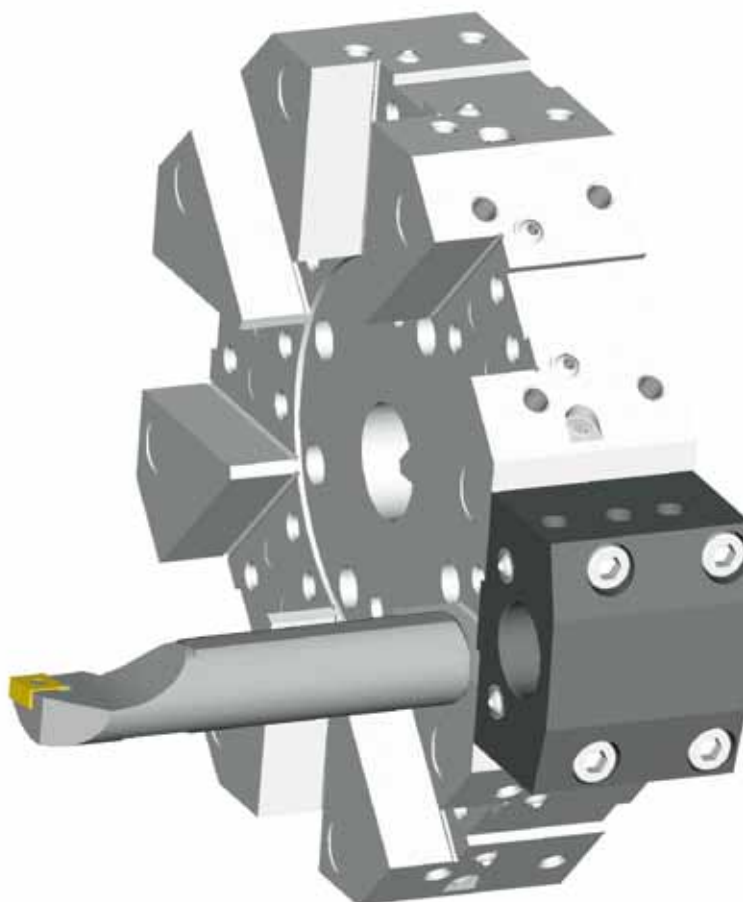
Vices & Clamps

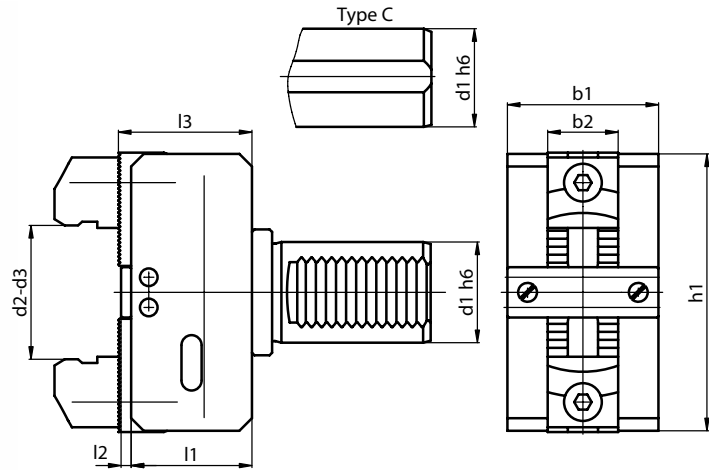
HSK ICTM



LONGITUDINAL TOOL HOLDER WITH REVERSABLE SQUARE SEAT **PU2**

Order Code	£	h1	h2	h3	h4	h5	b1	b2	b3	l1	l2	l3
PU2-12-12	£140.40	12	24	48	12	36	40	12	21.5	28	12	3
PU2-16-16	£143.52	16	32	61	16	46.5	50	14.5	28	38	16	3
PU2-20-20	£159.12	20	40	74	20	57	60	17.5	34	43	20	3
PU2-25-25	£184.08	25	50	92	25	71	75	22	43	53	25	3
PU2-32-32	£208.00	32	64	115	32	90	95	26	57	63	32	3
PU2-40-40	£241.28	40	80	142	40	111	125	33	77	75	40	5

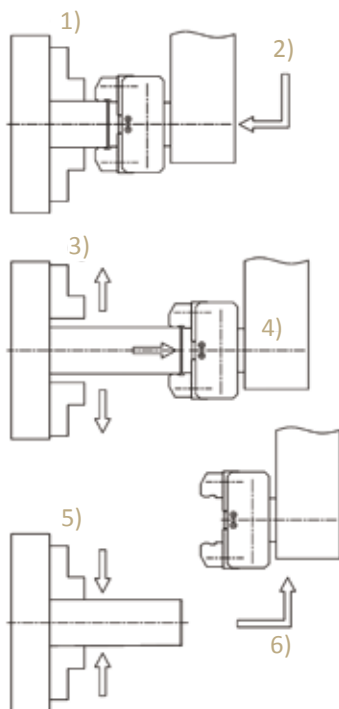




BAR PULLER (Complete With 1 Set of Long & 1 Set of Short Jaws)

Order Code	£	d1	d2 (short)	d2 (long)	b1	b2	h1	l1	l2	l3
H116K	£507.52	16	6-56	54-110	50	28	72	46	4	51
H120K	£507.52	20	6-56	54-110	50	28	72	46	4	51
H125K	£532.48	25	6-56	54-110	50	28	72	46	4	51
H125KC*	£515.84	25	6-56	54-110	50	28	72	46	4	51
H130K	£557.44	30	6-56	54-110	50	28	72	46	4	51
H132KC*	£544.96	32	6-56	54-110	50	28	72	46	4	51
H140K	£615.68	40	6-56	54-110	60	28	110	48	4	53
H140KC*	£594.88	40	6-56	54-110	60	28	110	48	4	53
H150K	£865.28	50	10-75	62-125	65	28	130	67	5	73
H150KC*	£848.64	50	10-75	62-125	65	28	130	67	5	73
H160K	£1,098.24	60	10-75	62-125	65	28	130	67	5	73

*Type C - Plain Shank



- 1) The self centering chuck stops.
- 2) After positioning, the jaws (3-5mm less than the bar diameter) clamp the bar.
- 3) The self centering chuck opens.
- 4) The bar puller pulls the bar.
- 5) The self centering chuck clamps the bar.
- 6) The bar puller releases the bar.