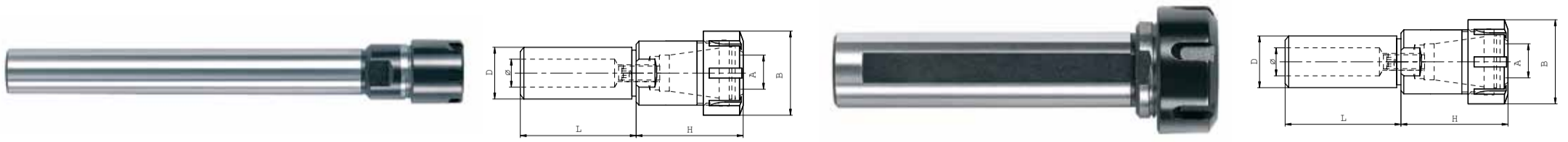


## ANY 4 TOOLS £99!

## STRAIGHT SHANK ER COLLET CHUCKS



### STRAIGHT SHANK ER COLLET CHUCK WITH MINI NUT

- Standard, medium and extended lengths
- Ideal for extending tool reach and difficult to reach places with mini nut

Order Code	£	D	L	H	B	Clamping Capacity	ER
C10-ER11-100M	£49.00	10	100	25	16	0.5-7	ER11M
C10-ER16-100M	£49.00	10	100	37	22	0.5-10	ER16M
C12-ER11-100M	£49.00	12	100	25	16	0.5-7	ER11M
C12-ER16-120M	£49.00	12	120	37	22	0.5-10	ER16M
C16-ER11-50M	£49.00	16	50	22	16	0.5-7	ER11M
C16-ER11-100M	£49.00	16	100	22	16	0.5-7	ER11M
C16-ER16-100M	£49.00	16	100	37	22	0.5-10	ER16M
C20-ER16-50M	£49.00	20	50	30	22	0.5-10	ER16M
C20-ER16-100M	£49.00	20	100	30	22	0.5-10	ER16M
C20-ER16-150M	£49.00	20	150	30	22	0.5-10	ER16M
C20-ER25-100M	£55.00	20	100	46	35	0.5-16	ER25M
C25-ER16-100M	£55.00	25	100	27	22	0.5-10	ER16M
C25-ER16-160M	£65.00	25	160	27	22	0.5-10	ER16M
C25-ER20-100M	£65.00	25	100	28	28	0.5-13	ER20M

### STRAIGHT SHANK ER COLLET CHUCK

- Standard, medium and extended lengths
- Ideal for extending tool reach

Order Code	£	D	L	H	B	Clamping Capacity	ER
C16-ER16-60	£49.00	16	60	36	32	0.5-10	ER16
C16-ER16-100	£49.00	16	100	36	32	0.5-10	ER16
C20-ER16-100	£49.00	20	100	31	32	0.5-10	ER16
C20-ER25-50	£65.00	20	50	46	42	0.5-16	ER25
C20-ER25-100	£59.00	20	100	46	42	0.5-16	ER25
C20-ER25-150	£59.00	20	150	46	42	0.5-16	ER25
C20-ER32-100	£55.00	20	100	54	50	2-20	ER32
C20-ER32-160	£69.00	20	160	54	50	2-20	ER32
C25-ER25-100	£55.00	25	100	32	42	0.5-16	ER25
C25-ER25-150	£55.00	25	150	32	42	0.5-16	ER25
C25-ER32-80	£55.00	25	100	54	50	2-20	ER32
C25-ER32-160	£69.00	25	160	54	50	2-20	ER32
C32-ER25-60	£55.00	32	60	28	42	0.5-16	ER25
C32-ER25-60	£59.00	32	60	28	42	0.5-16	ER25
C32-ER32-100	£65.00	32	100	38	50	2-20	ER32
C32-ER32-150	£75.00	32	150	38	50	2-20	ER32
C32-ER40-100	£59.00	32	100	60	63	3-30	ER40
C40-ER32-100	£69.00	40	100	30	50	2-20	ER32
C40-ER40-130	£79.00	40	130	60	63	3-30	ER40

## Accessories ER COLLET CHUCK NUTS



ER Collet Chuck Type	Fig.	Thread	Order Code	£
ER11	1	M14x0.75	CN11	£10.00
ER16	1	M22x1.5	CN16	£10.00
ER16	2	M22x1.5	812-203005	£10.00
ER20	1	M25x1.5	CN20	£10.00
ER20	2	M25x1.5	812-203006	£10.00
ER25	2	M32x1.5	CN25	£10.00
ER32	2	M32x1.5	CN32	£10.00
ER40	2	M50x1.5	CN40	£10.00

## ER COLLETS

### STANDARD ER COLLETS

Order Code	£	Type	Size Range
ER11-D□□	£7.23	ER11	1 - 7mm
ER16-D□□	£5.19	ER16	1 - 10mm
ER20-D□□	£5.19	ER20	1 - 13mm
ER25-D□□	£6.03	ER25	1 - 16mm
ER32-D□□	£6.03	ER32	2 - 20mm
ER40-D□□	£7.59	ER40	3 - 26mm

Order code e.g. ER11-D06 = 6mm collet

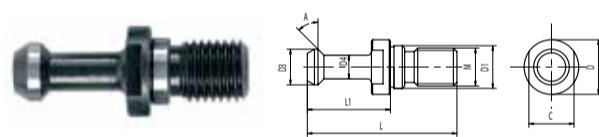
### THROUGH COOLANT ER COLLETS (WITH NEOPRENE INSERTS)

Order Code	£	Type	Size Range
ER11VGD-□□	£35.00	ER11	3 - 7mm
ER16VGD-□□	£24.96	ER16	3 - 10mm
ER20VGD-□□	£24.96	ER20	3 - 13mm
ER25VGD-□□	£24.96	ER25	3 - 16mm
ER32VGD-□□	£24.96	ER32	3 - 20mm
ER40VGD-□□	£29.00	ER40	3 - 26mm

Order code e.g. ER11-VGD06 = 6mm collet

# BUY 3 GET 1 FREE!

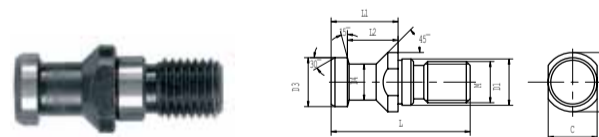
### BT MAS PULL STUDS



Order Code	£	TAPER	A	M	L1	L	D	D1	D3	D4
BT40-45	£3.64	40	45	M16	35	60	23	17	15	10
BT40-90	£3.64	40	90	M16	35	60	23	17	15	10
BT50-45	£4.68	50	45	M24	45	85	38	25	23	17
BT40-45C*	£3.99	40	45	M16	35	60	23	17	15	10
BT40-90C*	£3.99	40	90	M16	35	60	23	17	15	10
BT50-45C*	£4.68	50	45	M24	45	85	38	25	23	17

\*THROUGH COOLANT

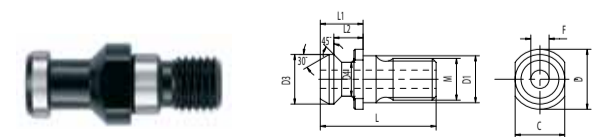
### DIN69872 PULL STUDS



Order Code	£	TAPER	M	D	D1	D3	D4	L	L1
DIN69872B-P16D	£3.64	40	M16	23	17	19	14	54	26
DIN69872B-P24D	£4.15	50	M24	36	25	28	21	74	34
DIN69872A-P16D*	£3.99	40	M16	23	17	19	14	54	26
DIN69872A-P24D*	£4.50	50	M24	36	25	28	21	74	34

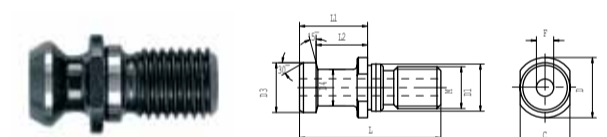
\*THROUGH COOLANT

### BT MAS MAZAK PULL STUDS



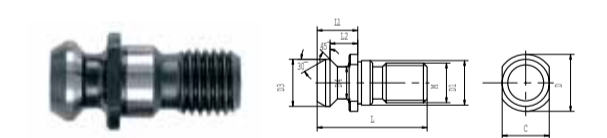
Order Code	£	TAPER	M	D	D1	D3	D4	L	L1
BT40MAZAK	£8.32	40	M16	21.8	17	18.8	12.4	41.2	16.2
BT40MAZAK-2	£8.32	40	M16	22	17	18.8	12.4	44.1	19.1
BT50MAZAK	£8.32	50	M24	35.5	25	28.9	20.8	65.4	25.4

### BRIDGEPORT PULL STUDS



Order Code	£	TAPER	M	D	D1	D3	D4	L	L1	L2
BRIDGEPORT-PS	£8.32	40	M16	23	17	19	14	54	29	23

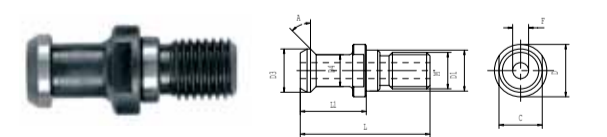
### ISO7388/2B PULL STUDS



Order Code	£	TAPER	M	D	D1	D3	D4	L	L1	L2
217-21608	£8.32	40	M16	22,5	17	18,9	44,5	16,4	11,2	
217-21609	£9.36	50	M24	37	25	29,1	65,5	25,5	17,9	
217-21601*	£8.56	40	M16	22,5	17	18,9	44,5	16,4	11,2	
217-21602*	£10.40	50	M24	37	25	29,1	65,5	25,5	17,9	

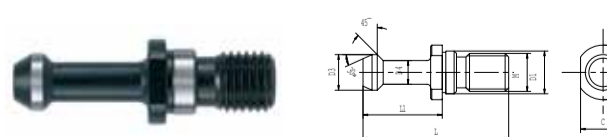
\*THROUGH COOLANT

### JIS.B6339 PULL STUDS



Order Code	£	TAPER	A	M	D	D1	D3	D4	L	L1	L2
217-22134	£8.84	40	15°	M16	23	17	19	14	54	10	

### CINCINATTI PULL STUDS



Order Code	£	TAPER	M	D	D1	D3	D4	L	L1
CINCINATTI-PS1	£9.88	40	M16	22.2	17	15	10.3	67.5	39.4
CINCINATTI-PS2	£9.88	40	M16	22.2	17	15	10.3	64.5	36.6