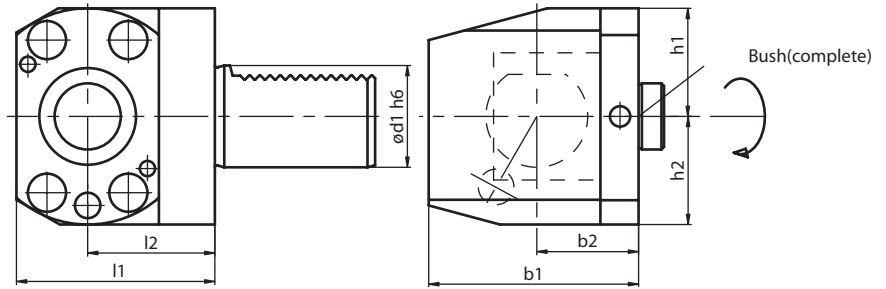


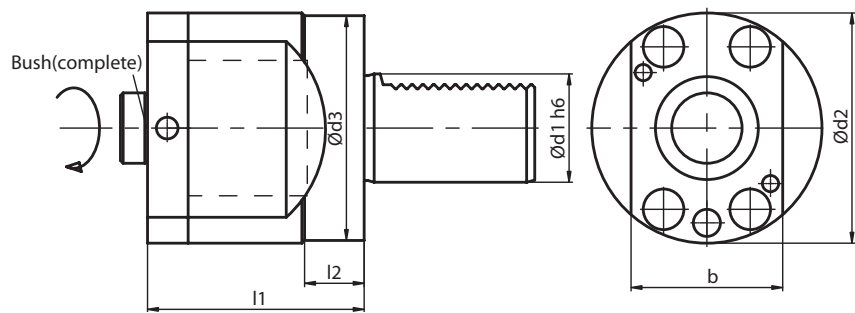


# HSK ICTM Quick Change Turning System



## RADIAL TOOLHOLDER WITH HSK COUPLING

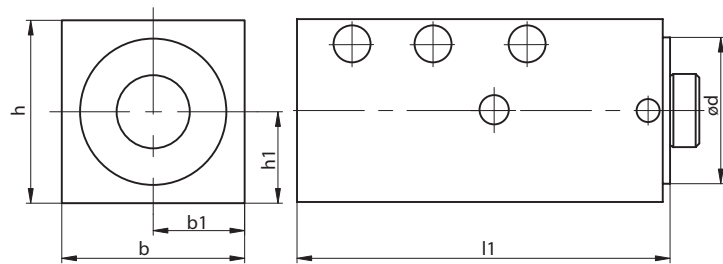
Order Code	£	HSK	d1	b1	b2	h1	h2	l1	l2	Bush
H32AOV30L	£544.00	32	30	65	30	28	33	58	40	H32ABSL
H32AOV30R	£544.00	32	30	65	30	28	33	58	40	H32ABSL
H32AOV40L	£560.00	32	40	80	40	30	40	58	40	H32ABSL
H32AOV40R	£560.00	32	40	80	40	30	40	58	40	H32ABSL
H40AOV40L	£571.00	40	40	80	40	34	40	67.5	45	H40ABSL
H40AOV40R	£571.00	40	40	80	40	34	40	67.5	45	H40ABSL
H50AOV40L	£593.00	50	40	80	40	42.5	42.5	78	50	H50ABSL
H50AOV40R	£593.00	50	40	80	40	42.5	42.5	78	50	H50ABSL
H50AOV50L	£610.00	50	50	90	40	42.5	48	78	50	H50ABSL
H50AOV50R	£610.00	50	50	90	40	42.5	48	78	50	H50ABSL
H63AOV50L	£684.00	63	50	90	40	53	53	90	55	H63ABSL
H63AOV50R	£684.00	63	50	90	40	53	53	90	55	H63ABSL



## AXIAL TOOLHOLDER WITH HSK COUPLING

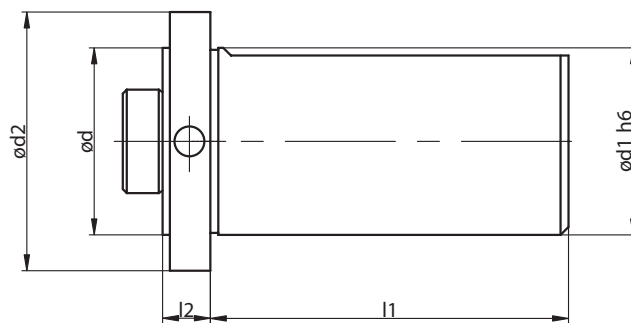
Order Code	£	HSK	d1	d2	d3	b	l1	l2	Bush
H32ADV30	£519.00	32	30	55	68	36	52	22	H32ABSL
H32ADV40	£535.00	32	40	55	83	36	52	22	H32ABSL
H40ADV40	£544.00	40	40	68	83	45	60	22	H40ABSL
H50ADV40	£568.00	50	40	85	83	56	75	25	H50ABSL
H50ADV50	£589.00	50	50	85	98	56	75	30	H50ABSL
H63ADV40	£643.00	63	40	106	83	70	90	25	H63ABSL
H63ADV50	£660.00	63	50	106	98	70	90	33	H63ABSL

Spindle Tooling  
 Dincox Modular  
 Angle Heads  
 VDI Tooling  
 Driven Tooling  
 Vices & Clamps  
 HSK ICTM



**TOOLHOLDER WITH SQUARE SHANK & HSK COUPLING**

Order Code	£	d	b	b1	h	h1	l1
H40ASTQ50L	£291.00	40	48	24	50	25	120
H40ASTQ50R	£291.00	40	48	24	50	25	120
H50ASTQ50L	£328.00	50	50	25	50	25	140
H50ASTQ50R	£328.00	50	50	25	50	25	140



**TOOLHOLDER WITH CYLINDRICAL SHANK & HSK COUPLING**

Order Code	£	d	d1	d2	l1	l2
H40ASTC40	£282.00	40	40	50	80	12
H50ASTC40	£316.00	50	40	50	80	30
H63ASTC50	£432.00	63	50	63	160	36

**HSK DIN69893 Tools & Toolholders**

The *drive keys tolerance* (ICTM) was invented to reduce the positive allowance between the spindle drive key and the holder key slot.

- Maximum position error on the cutting edge of +/-0,005mm .
- Manufactured from case hardened steel.
- Hardness of HRc 58 +/-2.
- Internal and external ground finish.
- Perfect tool interchangeability.
- The ultimate tooling system for performance, precision and tool optimization.