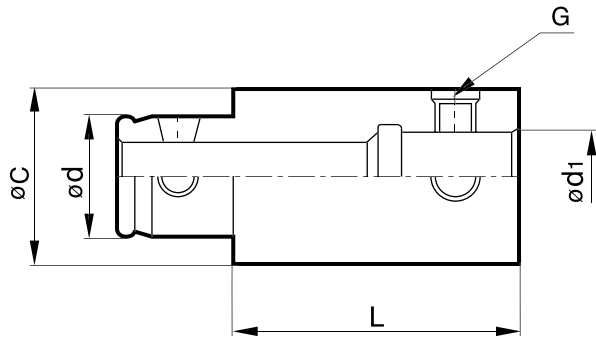




MODULAR Extension Bar (MD-EXT Series)

For Use With Microboring Systems (FBH Series) & Twin Cut Balanced Tools (DBC Series) & MD Series (BT MAS or DIN69871) Basic Toolholders



- For extending reach length on MD Modular systems
- Special design cone locking screw for fast and accurate setting
- High accuracy assembly (error less than 5µm)

Extension Bar (EXT Series)

Order Code	£	MD No.	ØC	Ød	L	Ød1	G
EXT1930F	£44.00	MD1911	19	11	30	11	M5
EXT1950F	£44.00	MD1911	19	11	50	11	M5
EXT2530F	£46.00	MD2514	25	14	30	14	M6
EXT2550F	£52.00	MD2514	25	14	50	14	M6
EXT3235F	£52.00	MD3218	32	18	35	18	M8
EXT3260F	£52.00	MD3218	32	18	60	18	M8
EXT4040F	£52.00	MD4022	40	22	40	22	M10
EXT4090F	£55.00	MD4022	40	22	90	22	M12
EXT5050F	£55.00	MD5028	50	28	50	28	M12
EXT50100F	£61.00	MD5028	50	28	100	28	M12
EXT6360F	£55.00	MD6336	63	36	60	36	M16
EXT63120F	£61.00	MD6336	63	36	120	36	M16
EXT8070F	£78.00	MD8045	80	45	70	45	M16
EXT80120F	£84.00	MD8045	80	45	120	45	M16
EXT9080F	£95.00	MD9045	90	45	80	45	M16
EXT90130F	£95.00	MD9045	90	45	130	45	M16