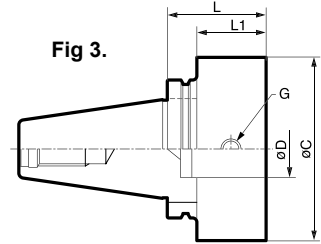
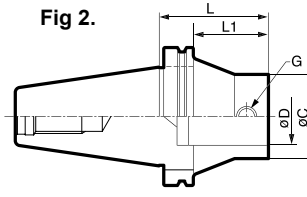
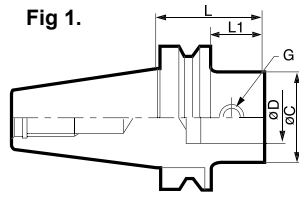




MODULAR BT MAS Basic Holders (MD Series)

For Use With Microboring Systems (FBH Series) & Twin Cut Balanced Tools (DBC Series)



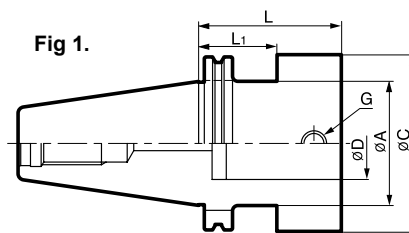
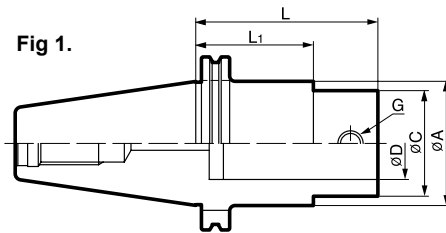
BT MAS - Basic Holder (MD Series)

Order Code (Basic Body)	£	MD No	ØC	ØD	L	L1	G	KG	Fig
BT40-MD19F-70	£89.00	MD1911	19	11	70	43	M5	1.8	1
BT40-MD25F-95	£89.00	MD2514	25	14	95	68	M6	1.9	1
BT40-MD25F-105R	£90.00	MD2514	25	14	105	78	M6	1.9	1
BT40-MD32F-100	£92.00	MD3218	32	18	100	73	M8	2.3	1
BT40-MD32F-115R	£94.00	MD3218	32	18	115	88	M8	2.4	1
BT40-MD40F-60	£94.00	MD4022	40	22	60	33	M10	2.7	2
BT40-MD40F-110R	£107.00	MD4022	40	22	110	83	M10	2.7	2
BT40-MD40F-115	£110.00	MD4022	40	22	115	88	M10	2.7	1
BT40-MD50F-100R	£110.00	MD5028	50	28	100	73	M12	2.7	2
BT40-MD50F-105	£110.00	MD5028	50	28	105	78	M12	2.7	1
BT40-MD63F-64	£122.00	MD6336	63	36	64	37	M16	3.3	3
BT40-MD63F-90	£125.00	MD6336	63	36	90	63	M16	3.6	3
BT40-MD63F-110	£129.00	MD6336	63	36	110	83	M16	4.6	3
BT40-MD63F-135	£132.00	MD6336	63	36	135	108	M16	4.7	3
BT40-MD80F-100	£132.00	MD8045	80	45	100	73	M16	4.8	3
BT50-MD19F-85	£92.00	MD1911	19	11	85	47	M5	4.3	1
BT50-MD19F-100	£92.00	MD1911	19	11	100	62	M5	4.3	1
BT50-MD25F-55	£99.00	MD2514	25	14	55	17	M6	4.3	1
BT50-MD25F-105	£101.00	MD2514	25	14	105	67	M6	4.5	1
BT50-MD25F-120R	£103.00	MD2514	25	14	120	82	M6	4.7	2
BT50-MD32F-110	£107.00	MD3218	32	18	110	72	M8	5.1	1
BT50-MD32F-115R	£107.00	MD3218	32	18	115	77	M8	5.1	2
BT50-MD32F-235R	£138.00	MD3218	32	18	235	148	M8	5.1	2
BT50-MD40F-60	£120.00	MD4022	40	22	60	22	M10	5	1
BT50-MD40F-125R	£121.00	MD4022	40	22	125	87	M10	5.1	1
BT50-MD40F-145	£129.00	MD4022	40	22	230	107	M10	5.1	1
BT50-MD50F-70	£125.00	MD5028	50	28	70	22	M12	5.6	1
BT50-MD50F-125	£125.00	MD5028	50	28	125	87	M12	6	1
BT50-MD50F-160R	£124.00	MD5028	50	28	160	122	M12	6.2	1
BT50-MD50F-225	£147.00	MD5028	50	28	225	187	M12	8.4	1
BT50-MD50F-250R	£156.00	MD5028	50	28	250	212	M12	6.5	2
BT50-MD63F-75	£131.00	MD6336	63	36	75	37	M12	6.8	1
BT50-MD63F-130	£138.00	MD6336	63	36	130	92	M16	6	1
BT50-MD63F-140	£139.00	MD6336	63	36	140	92	M16	6	1
BT50-MD63F-140R	£139.00	MD6336	63	36	140	102	M16	6	2
BT50-MD63F-195	£156.00	MD6336	63	36	195	157	M16	8	1
BT50-MD63F-230	£165.00	MD6336	63	36	230	192	M16	8.4	1
BT50-MD63F-240R	£151.00	MD6336	63	36	240	202	M16	8.4	2
BT50-MD80F-75	£139.00	MD8045	80	45	75	37	M16	9.1	1
BT50-MD80F-110	£146.00	MD8045	80	45	110	72	M16	9.4	1
BT50-MD80F-175	£165.00	MD8045	80	45	175	137	M16	9.5	1
BT50-MD90F-75	£147.00	MD9045	90	45	75	37	M16	9.8	1
BT50-MD90F-145	£161.00	MD9045	90	45	145	107	M16	10.2	1
BT50-MD90F-195	£175.00	MD9045	90	45	195	157	M16	10.4	1

DIN69871 Basic Holders (MD Series) MODULAR



For Use With Microboring Systems (FBH Series) & Twin Cut Balanced Tools (DBC Series)



SK DIN69871 - Basic Holder (MD Series)

Order Code (Basic Body)	£	MD No	ØC	ØD	ØA	L	L1	G	KG	Fig
SK40-MD19F-80	£89.00	MD1911	19	11	50	80	35	M5	1.8	1
SK40-MD25F-80	£89.00	MD2514	25	14	50	80	36	M6	1.8	1
SK40-MD25F-105	£90.00	MD2514	25	14	50	105	36	M6	1.9	1
SK40-MD32F-85	£90.00	MD3218	32	18	50	85	36	M8	2	1
SK40-MD32F-115	£92.00	MD3218	32	18	50	115	36	M8	2.3	1
SK40-MD40F-60	£94.00	MD4022	40	22	50	60	36	M10	2.4	1
SK40-MD40F-100	£107.00	MD4022	40	22	50	100	36	M10	2.4	1
SK40-MD40F-125	£108.00	MD4022	40	22	50	125	36	M10	2.7	1
SK40-MD50F-75	£109.00	MD5028	50	28	50	75	36	M12	2.2	2
SK40-MD50F-100	£107.00	MD5028	50	28	50	100	36	M12	2.2	2
SK40-MD63F-70	£124.00	MD6336	63	36	50	70	36	M16	3.3	2
SK50-MD19F-85	£92.00	MD1911	19	11	80	85	36	M5	4.2	1
SK50-MD25F-80	£99.00	MD2514	25	14	80	80	36	M6	4.3	1
SK50-MD25F-105	£101.00	MD2514	25	14	80	105	36	M6	4.7	1
SK50-MD32F-85	£105.00	MD3218	32	18	80	85	36	M8	4.8	1
SK50-MD32F-110	£107.00	MD3218	32	18	80	110	36	M8	5.1	1
SK50-MD32F-155	£110.00	MD3218	32	18	80	155	36	M8	5.3	1
SK50-MD40F-100	£122.00	MD4022	40	22	80	100	36	M10	5.2	1
SK50-MD40F-145	£129.00	MD4022	40	22	80	145	36	M10	5.3	1
SK50-MD40F-195	£138.00	MD4022	40	22	80	195	36	M10	5.4	1
SK50-MD40F-220	£144.00	MD4022	40	22	80	220	36	M10	5.5	1
SK50-MD50F-100	£123.00	MD5028	50	28	80	100	36	M12	5.8	1
SK50-MD50F-125	£125.00	MD5028	50	28	80	125	36	M12	6.1	1
SK50-MD50F-225	£147.00	MD5028	50	28	80	225	36	M12	6.6	1
SK50-MD50F-240	£154.00	MD5028	50	28	80	240	36	M12	6.8	1
SK50-MD63F-75	£131.00	MD6336	63	36	80	75	36	M16	5.6	1
SK50-MD63F-110	£135.00	MD6336	63	36	80	110	36	M16	5.8	1
SK50-MD63F-130	£138.00	MD6336	63	36	80	130	36	M16	5.8	1
SK50-MD63F-140	£139.00	MD6336	63	36	80	140	36	M16	6	1
SK50-MD63F-195	£156.00	MD6336	63	36	80	195	36	M16	8	1
SK50-MD63F-230	£165.00	MD6336	63	36	80	230	36	M16	8.3	1
SK50-MD80F-95	£143.00	MD8045	80	45	80	95	36	M16	9.2	2
SK50-MD80F-150	£162.00	MD8045	80	45	80	150	36	M16	9.5	2
SK50-MD90F-75	£147.00	MD9045	90	45	80	75	36	M16	9.3	2
SK50-MD90F-115	£158.00	MD9045	90	45	80	115	36	M16	10.1	2
SK50-MD90F-165	£171.00	MD9045	90	45	80	165	36	M16	10.3	2

MD Series Holders - Suitable for all the heads below.....

