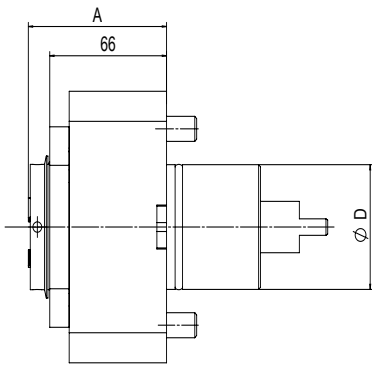
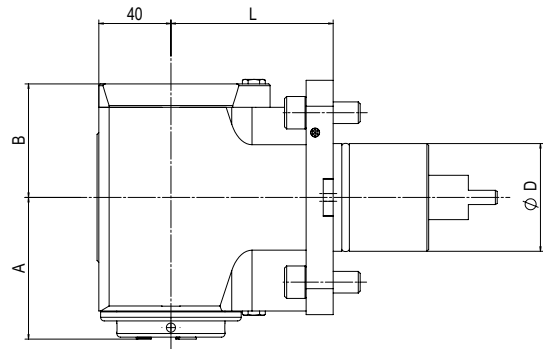


Machine type

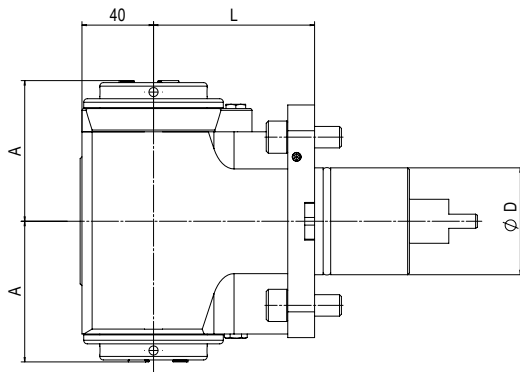
- NL 1500
- NL 2000
- NL 2500
- NL 3000
- NT 4250



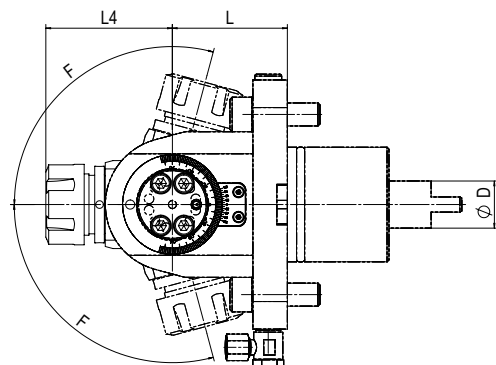
1



2



3



4

Driven Tools (ER Collet Chuck)

Part No.	Tool style	Fig	Tool holder	[min ⁻¹]	Gear ratio	[Nm]	EC	IC	[bar]	Dimensions				
										D	A	B	L	L ₄
115DA03551E6A	Axial	1	ER32	4.500	1:1	100	●	-	-	60	78,1	-	-	-
115EA03551E6A											83,2	-	-	-
115DA03551E7A			ER40								80	-	-	-
115EA03551E7A											84,9	-	-	-
115FAX03559E6AD	Radial	2	ER32	6.000	1:1	150	●	-	-	60	78,6	63	-	-
115GAX03559E6AD											83,7	70	-	-
115FAX03559E7AD			ER40								81,5	63	-	-
115GAX03559E7AD											86,4	70	90	-
115FAX03559E6A2	Radial Double spindle	3	ER32	6.000	1:1	150	●	-	-	60	78,6	-	-	-
115FAX03559E7A2			ER40								81,5	-	-	-
115FD03548E5	swiveling F= ±105°	4	ER25			32	●	-	-		-	-	60	66

Driven Tools With BMS Modular Adaptation

Part No.	Tool style	Fig	Tool holder	[min ⁻¹]	Gear ratio	[Nm]	EC	IC	[bar]	Dimensions				
										D	A	B	L	L ₄
115DA03551P5	Axial	1	BMS 50	4.500	1:1	100	●	-	-	60	89	-	-	-
115EA03551P5												89	-	-
115FAX03559P5D	Radial	2		6.000		150	●	-	-		100	63	-	-
115GAX03559P5D												70	-	-
115FAX03559P52	Radial Double spindle	3				150	●	-	-		84	-	90	-

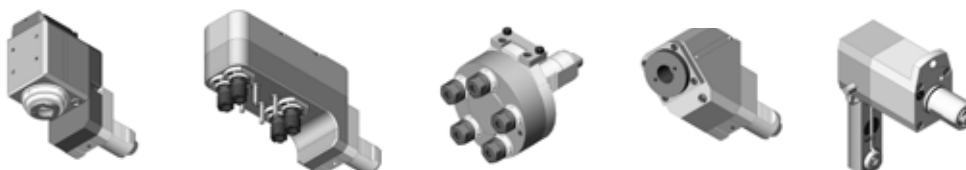
EC: external coolant, IC: internal coolant
All driven tool prices on application

All Driven Tools available with BMS Modular System output.

Please see age E77-E80 for BMS Modular Adaptors.

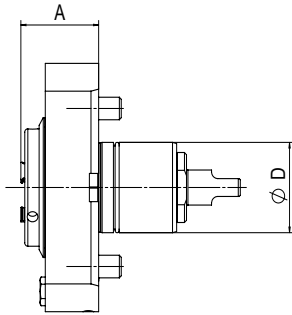


Please call our technical team for any driven tool not listed above

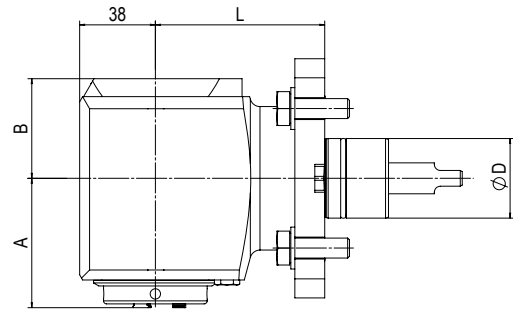


Machine type

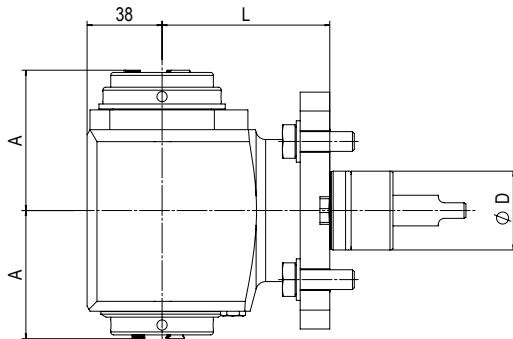
NZ 1500
NZ 2000



1



2



3

X-line Crown Gear Driven Tools

Benz driven tools have patented X-Line angular gears composed of spur gears and crown gears. The benefit is:

- Higher speed rpm
- Transfer higher torque
- Increased system rigidity by using optimized application of bearings
- Longer durability of cutting edge
- Compact aggregates with less wear and tear parts

Driven Tools (ER Collet Chuck)

Part No.	Tool style	Fig	Tool holder	[min ⁻¹]	Gear ratio	[Nm]	EC	IC	[bar]	Dimensions				
										D	A	B	L	
113DA05300E5A	Axial	1	ER 25	6.000	1:1	50	●	-	-	40	37,9	-	-	85
113EA05300E5A							●	●	50		62,4	-	-	
113DA05341E5A							●	-	-		71,9	-	-	
113EA05341E5A							●	●	50		76,9	-	-	
113FAX05349E5AD	Radial	2	ER 25	6.000	1:1	70	●	-	-	40	64,9	50	85	
113GAX05349E5AD							●	●	100		69,9	60		
113FAX05349E5A2	Radial Double spindle	3				70	●	-	-		64,9	-		-
							●	-	-					

Driven Tools With BMS Modular Adaptation

Part No.	Tool style	Fig	Tool holder	[min ⁻¹]	Gear ratio	[Nm]	EC	IC	[bar]	Dimensions				
										D	A	B	L	
113DA05300P3	Axial	1	BMS 32	6.000	1:1	50	●	-	-	40	44	-	-	85
113EA05300P3							●	●	50		58	-	-	
113FAX05339P3R/L	Radial	2				70	●	-	-		70	50	60	
113GAX05339P3R/L							●	●	100					
113FAX05339P32	Radial Double spindle	3	70	●	-	-								

EC: external coolant, IC: internal coolant
All driven tool prices on application

All Driven Tools available with BMS Modular System output.

Please see age E77-E80 for BMS Modular Adaptors.



Please call our technical team for any driven tool not listed above

