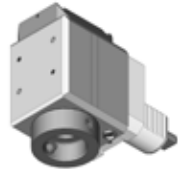


## Cutting Aggregates



## Tool holders for multi task machines

Coromant Capto®



BMS

SK



BMS

HSK



BMS

## Static tool holder

VDI



BMS

## BMS Adapter



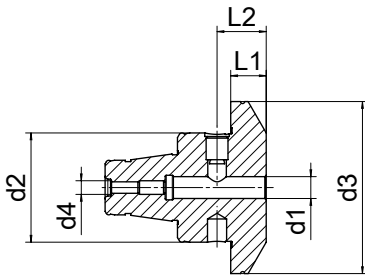
- Weldon for parallel shanks DIN 1835 B
- Whistle Notch for parallel shanks DIN 1835 E
- Shrink fit chucks
- Softsynchro® with IC
- Collet chucks 8° type ER
- Milling machine arbors with IC
- Closing Plug
- Test arbors
- Boring bar-blanks



## Advantages BMS - Modular System

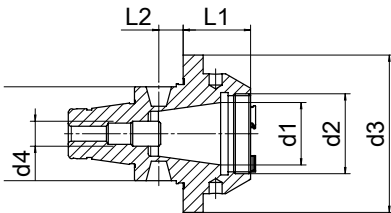
- Compact design, less interference and increased usable workspace area
- Highest concentricity and repeatability when changing tools
- Highest system rigidity due to planned assets and taper support
- Increased tool cutting life
- Tools are able to be pre-set
- Speed up to 14.000 rpm
- Extremely user friendly





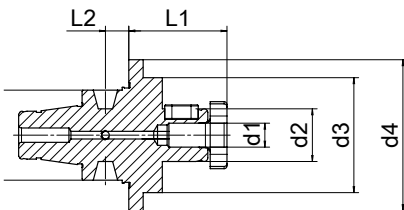
### BMS Collet chuck adapter DIN 1835E

	Part No.	Size	d <sub>1</sub>	d <sub>2</sub>	d <sub>3</sub>	d <sub>4</sub>	d <sub>5</sub>	L <sub>1</sub>	L <sub>2</sub>
BMS 32	663.1410611	Ø 6	6	32	50	M5	-	11	18
	663.1410811	Ø 8	8	32	50	M5	-	11	18
	663.1411011	Ø 10	10	32	50	M8	-	11	20
	663.1411215	Ø 12	12	32	50	M8	-	15	22,5
	663.1411431	Ø 14	14	32	50	M8	-	31	22,5
	663.1411644	Ø 16	16	32	50	M8	-	44	24
	663.1411844	Ø 18	18	32	50	M8	-	44	24
BMS 40	664.1410613	Ø 6	6	40	63	M5	-	13	18
	664.1410813	Ø 8	8	40	63	M5	-	13	18
	664.1411012	Ø 10	10	40	63	M8	-	12	20
	664.1411214	Ø 12	12	40	63	M10	-	14,5	22,5
	664.1411414	Ø 14	14	40	63	M10	-	14,5	22,5
	664.1411634	Ø 16	16	40	63	M12	-	34	24
	664.1411834	Ø 18	18	40	63	M12	-	34	24
BMS 50	665.1410613	Ø 6	6	48	75	M5	-	13	18
	665.1410813	Ø 8	8	48	75	M5	-	13	18
	665.1411014	Ø 10	10	48	75	M8	-	13	20
	665.1411215	Ø 12	12	48	75	M10	-	15	22,5
	665.1411415	Ø 14	14	48	75	M10	-	15	22,5
	665.1411615	Ø 16	16	48	75	M12	-	15	24
	665.1411815	Ø 18	18	48	75	M12	-	15	24
665.1412015	Ø 20	20	48	75	M12	-	15	25	



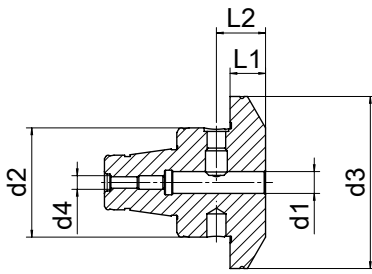
### BMS Collet Chuck DIN 6499

	Part No.	Size	d <sub>1</sub>	d <sub>2</sub>	d <sub>3</sub>	d <sub>4</sub>	d <sub>5</sub>	L <sub>1</sub>	L <sub>2</sub>
BMS 32	663.130E338	ER 16	16	M22x1,5	50	M8	32	27,5	8,8
	663.130E3A16	ER 16	16	M24x1	50	M8	32	16	8,8
	663.130E540	ER 25	25	M32x1,5	50	M8	32	28,5	8,8
	663.130E5A36	ER 25	25	M32x1,5	50	M8	32	36	8,8
BMS 40	664.130E540	ER 25	25	M32x1,5	63	M10	40	28,5	9,75
	664.130E5A27	ER 25	25	M32x1,5	63	M10	40	27	9,75
	664.130E644	ER 32	32	M40x1,5	63	M10	40	44	9,75
BMS 50	665.130E6A43	ER 32	32	M40x1,5	63	M10	40	43	9,75
	665.130E7A50	ER 40	40	M50X1,5	75	M10	48	43	10



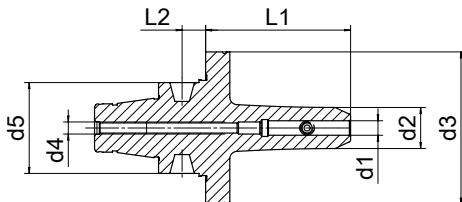
### BMS Milling machine adapter

	Part No.	Size	d <sub>1</sub>	d <sub>2</sub>	d <sub>3</sub>	d <sub>4</sub>	d <sub>5</sub>	L <sub>1</sub>	L <sub>2</sub>
BMS 32	663.2311614	Ø 16	M8	16	48	50	32	38	8,8
	663.2312214	Ø 22	M10	22	48	50	32	41	8,8
BMS 40	664.2311614	Ø 16	M8	16	48	63	40	38	9,75
	664.2312214	Ø 22	M10	22	48	63	40	41	9,75
	664.2312720	Ø 27	M12	27	55	63	40	49	9,75
BMS 50	665.231214	Ø 22	M10	22	48	70	48	14	10
	665.231714	Ø 27	M12	27	55	70	48	14	10
	665.231215	Ø 32	M16	32	58	70	48	15	10
	665.231015	Ø 40	M20	40	70	70	48	15	10



BMS Weldon adapter, short version DIN1835B

	Part No.	Size	d <sub>1</sub>	d <sub>2</sub>	d <sub>3</sub>	d <sub>4</sub>	d <sub>5</sub>	L <sub>1</sub>	L <sub>2</sub>
BMS 32	663.1400611	Ø 6	6	32	50	M5	-	11	18
	663.1400811	Ø 8	8	32	50	M5	-	11	18
	663.1401011	Ø 10	10	32	50	M8	-	11	20
	663.1401215	Ø 12	12	32	50	M8	-	15	22,5
	663.1401431	Ø 14	14	32	50	M8	-	31	22,5
	663.1401644	Ø 16	16	32	50	M8	-	44	24
	663.1401844	Ø 18	18	32	50	M8	-	44	24
BMS 40	663.1402047	Ø 20	20	32	50	M8	-	47	25
	664.1400613	Ø 6	6	40	63	M5	-	13	18
	664.1400813	Ø 8	8	40	63	M5	-	13	18
	664.1401012	Ø 10	10	40	63	M8	-	12	20
	664.1401214	Ø 12	12	40	63	M10	-	14,5	22,5
	664.1401414	Ø 14	14	40	63	M10	-	14,5	22,5
	664.1401634	Ø 16	16	40	63	M12	-	34	24
BMS 50	664.1401834	Ø 18	18	40	63	M12	-	34	24
	664.1402036	Ø 20	20	40	63	M12	-	36	25
	665.1400613	Ø 6	6	48	75	M5	-	13	18
	665.1400813	Ø 8	8	48	75	M5	-	13	18
	665.1401014	Ø 10	10	48	75	M8	-	13	20
	665.1401215	Ø 12	12	48	75	M10	-	15	22,5
	665.1401415	Ø 14	14	48	75	M10	-	15	22,5
	665.1401615	Ø 16	16	48	75	M12	-	15	24
	665.1401815	Ø 18	18	48	75	M12	-	15	24
	665.1402015	Ø 20	20	48	75	M12	-	15	25



BMS Weldon adapter, long version DIN1835B

	Part No.	Size	d <sub>1</sub>	d <sub>2</sub>	d <sub>3</sub>	d <sub>4</sub>	d <sub>5</sub>	L <sub>1</sub>	L <sub>2</sub>
BMS 32	663.1400660	Ø 6	6	17	50	M5	32	60	8,8
	663.1400860	Ø 8	8	21	50	M5	32	60	8,8
	663.1401060	Ø 10	10	24	50	M8	32	60	8,8
	663.1401260	Ø 12	12	27	50	M10	32	60	8,8
	663.1401460	Ø 14	14	29	50	M10	32	60	8,8
	663.1401660	Ø 16	16	33	50	M12	32	60	8,8
	663.1401860	Ø 18	18	39	50	M12	32	60	8,8
BMS 40	664.1400660	Ø 6	6	17	63	M5	40	60	9,75
	664.1400860	Ø 8	8	21	63	M5	40	60	9,75
	664.1401060	Ø 10	10	24	63	M8	40	60	9,75
	664.1401260	Ø 12	12	27	63	M10	40	60	9,75
	664.1401460	Ø 14	14	29	63	M10	40	60	9,75
	664.1401660	Ø 16	16	33	63	M12	40	60	9,75
	664.1401860	Ø 18	18	39	63	M12	40	60	9,75
	664.1402060	Ø 20	20	39	63	M12	40	60	9,75