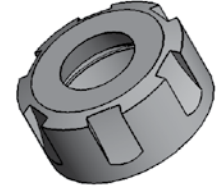




**Regofix ER Collets**  
System ER/ESX DIN 6499, 8°

Part No.	ER	clamping range	d <sub>2</sub>	l <sub>1</sub>	Hole d <sub>1</sub>	kg
B134-A2...	11	1-7	11,5	18	1,4-3,5	0,02
B134-A3...	16	1-10	17	27	1,4-6	0,02
B134-A4...	20	1-13	21	31	2,2-7	0,03
B134-A5...	25	1-16	21	35	2,5-10	0,06
B134-A6...	32	3-20	33	40	4,5-12	0,15
B134-A7...	40	4-26	33	40	6-16	0,31

e.g. : ER 16, Bore hole 2,5 B134-A3-0250



**ER Collet Nuts**  
Form D+E

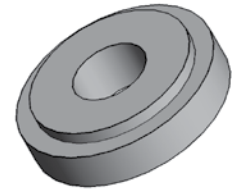
Part No.	ER	clamping range	d <sub>1</sub>	l <sub>1</sub>	kg
B135-E1	11	1-7	19	11	0,02
B135-E3	16	1-10	28	17	0,02
B135-E4	20	1-13	34	19	0,03
B135-E5	25	1-16	42	20	0,06
B135-E6	32	3-20	50	22	0,15
B135-E7	40	4-26	63	25	0,31
B135-E8	50	10-34	78	35	0,35



**ER Collet Nuts**  
For tools with internal coolant

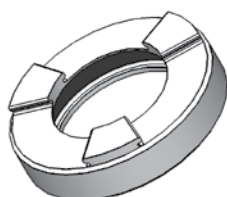
Part No.	ER	clamping range	l <sub>1</sub>	d <sub>1</sub>	kg
B135-H3A	16	1-10	22,5	28	0,02
B135-H4A	20	1-13	24	34	0,02
B135-H5A	25	2-16	25	42	0,06
B135-H6A	32	2-20	27,5	50	0,10

When using driven tools with internal coolant a sealing disk is needed.



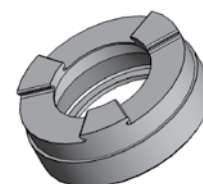
**Sealing disk**

Part No.	ER	clamping range	l <sub>1</sub>	d <sub>1</sub>	kg
B135-H3A	16	1-10	22,5	128	0,02
B135-H4A	20	1-13	24	34	0,02
B135-H5A	25	2-16	25	42	0,06
B135-H6A	32	2-20	27,5	50	0,10
B135-H7A	40	4-26	30,5	63	0,20



Internal ER collet nuts

Part No.	ER	clamping range	kg
B135-E1AX	11	1-7	0,02
B135-E3AX	16	1-10	0,02
B135-E4AX	20	1-13	0,03
B135-E5AX	25	1-16	0,06
B135-E6AX	32	3-20	0,15
B135-E7AX	40	4-26	0,31
B135-E8AX	50	10-34	0,35



Internal collet nuts for tools internal coolant

Part No.	ER	clamping range	kg
B135-E1AXC	11	1-7	0,02
B135-E3AXC	16	1-10	0,02
B135-E4AXC	20	1-13	0,03
B135-E5AXC	25	1-16	0,06
B135-E6AXC	32	3-20	0,15
B135-E7AXC	40	4-26	0,31



Clamping wrench for inside clamping nuts D+E

Bestell-Nr. Order No.	ER
B136-E1AX	11
B136-E3AX	16
B136-E4AX	20
B136-E5AX	25
B136-E6AX	32
B136-E7AX	40
B136-E8AX	50



Clamping wrench for external clamping nut

Bestell-Nr. Order No.	ER
B136-E1	11
B136-E3	16
B136-E4	20
B136-E5	25
B136-E6	32
B136-E7	40
B136-E8	50



Hook Wrenches DIN 1810 form B

Bestell-Nr. Order No.	ER
D01810B012014	12-14
D01810B016018	16-18
D01810B020022	20- 2
D01810B025028	25-28
D01810B030032	30-32
D01810B034036	34-36
D01810B040042	40-42
D01810B045050	45-50
D01810B052055	52-55
D01810B058062	58-62
D01810B068075	68-75
D01810B080090	80-90
D01810B095100	95-100